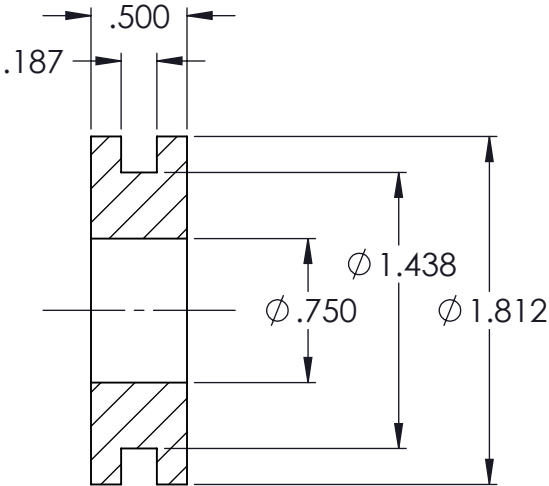
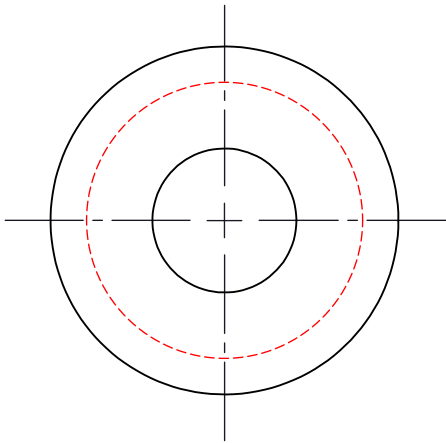



REVISIONS			
REV.	DESCRIPTION	DATE	APPROVED
1	INITIAL RELEASE OF DRAWING	5/4/2015	BS



NOTES:

1 MATERIAL: ELASTOMER AND DUROMETER TO BE SPECIFIED.

PROPRIETARY AND CONFIDENTIAL  THE INFORMATION CONTAINED IN THIS DRAWING IS THE SOLE PROPERTY OF KARMAN RUBBER. ANY REPRODUCTION IN PART OR AS A WHOLE WITHOUT THE WRITTEN PERMISSION OF KARMAN RUBBER IS PROHIBITED.	SIGNATURE		DATE	UNLESS OTHERWISE SPECIFIED:  DIMENSIONS ARE IN INCHES TOLERANCES: .X = ± 0.1 .XX = ± 0.01 .XXX = ± 0.005 ANGLES = ±1° INTERPRET GEOMETRIC TOLERANCING PER: ASME Y14.5M-1994
	DRAWN	B. SENECA	05/04/2015	
	CHECK	S. BROWN	05/04/2015	
	ENGR	B. SENECA	05/04/2015	
	QA			
	STRESS			
	APPR			



**KARMAN RUBBER**

**VIBRO-INSULATORS®**

FOR CONTROLLING NOISE, SHOCK & VIBRATION

SIZE

**B**

CAGE CODE

DO NOT SCALE DRAWING

TITLE: KGMS-79 (MS35489-79) GROMMET WWW.KARMAN.COM		DWG. NO. KGMS-79		REV 1
SCALE: 1:1	WEIGHT: N/A	SHEET 1 OF 1		